

**STANDARD THREADED WELL  
FOR 1/4" DIAMETER ELEMENTS**

**APPLICATION:**

Standard length, 1/4" Stem, Bi-metal thermometers; #20 gauge thermocouple elements; unarmored liquid-in-glass test thermometers. Other temperature sensing elements having .252 in. maximum diameter.

**CONNECTION SIZE:**

1/2", 3/4" and 1" NPT are standard. Other thread sizes are available upon request.

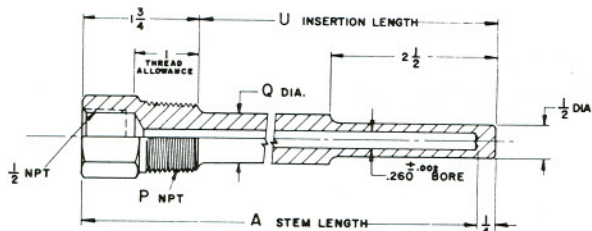
**MATERIALS:**

Brass (ASTM B-16); Carbon Steel (C-1018); Stainless Steel A.I.S.I. 304 & A.I.S.I. - 316; Monel. Wells are available also in special materials, prices on request.

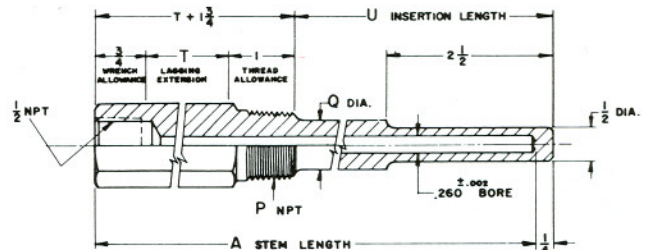
**CAP & CHAIN:**

Brass captive cap is available for keeping well bore clean when not in use.

**SERIES 260R - GENERAL USE**



**SERIES 260RL - LAGGING EXTENSION TYPE**



EXT. TH'D P	TYPE NUMBER	STEM LGTH. A	INSERT. LGTH. U	SHANK DIA. Q
1/2" NPT	1/2"-260R -U 2 1/2	4	2 1/2	—
	-U 4 1/2	6	4 1/2	5/8
	-U 7 1/2	9	7 1/2	"
	-U10 1/2	12	10 1/2	"
	-U13 1/2	15	13 1/2	"
	-U16 1/2	18	16 1/2	"
3/4" NPT	3/4"-260R -U 2 1/2	4	2 1/2	—
	-U 4 1/2	6	4 1/2	3/4
	-U 7 1/2	9	7 1/2	"
	-U10 1/2	12	10 1/2	"
	-U13 1/2	15	13 1/2	"
	-U16 1/2	18	16 1/2	"
1" NPT	1"-260R -U 2 1/2	4	2 1/2	—
	-U 4 1/2	6	4 1/2	7/8
	-U 7 1/2	9	7 1/2	"
	-U10 1/2	12	10 1/2	"
	-U13 1/2	15	13 1/2	"
	-U16 1/2	18	16 1/2	"

EXT. TH'D P	TYPE NUMBER	STEM LGTH. A	INSERT. LGTH. U	LAG. EXT. T	SHANK DIA. Q
1/2" NPT	1/2"-260RL -U 2 1/2	6	2 1/2	2	—
	-U 4 1/2	9	4 1/2	3	5/8
	-U 7 1/2	12	7 1/2	3	"
	-U10 1/2	15	10 1/2	3	"
	-U13 1/2	18	13 1/2	3	"
	-U19 1/2	24	19 1/2	3	"
3/4" NPT	3/4"-260RL -U 2 1/2	6	2 1/2	2	—
	-U 4 1/2	9	4 1/2	3	3/4
	-U 7 1/2	12	7 1/2	3	"
	-U10 1/2	15	10 1/2	3	"
	-U13 1/2	18	13 1/2	3	"
	-U19 1/2	24	19 1/2	3	"
1" NPT	1"-260RL -U 2 1/2	6	2 1/2	2	—
	-U 4 1/2	9	4 1/2	3	7/8
	-U 7 1/2	12	7 1/2	3	"
	-U10 1/2	15	10 1/2	3	"
	-U13 1/2	18	13 1/2	3	"
	-U19 1/2	24	19 1/2	3	"

**PRESSURE - TEMPERATURE RATING  
LBS. PER SQ. INCH**

(Values based on allowable stress levels published in the 1956 edition of the A.S.M.E. Boiler Code, Section VIII.)

MATERIAL	TEMPERATURE - °F.						
	70°	200°	400°	600°	800°	1000°	1200°
Brass	5000	4200	1000	---	---	---	---
Carbon Steel	5200	5000	4800	4600	3500	1500	---
A.I.S.I. - 304	7000	6200	5600	5400	5200	4500	1650
A.I.S.I. - 316	7000	7000	6400	6200	6100	5100	2500
Monel	6500	6000	5400	5300	5200	1500	---

**MAXIMUM FLUID VELOCITY  
FEET PER SECOND**

WELL TYPE	MATERIAL	INSERTION LENGTH - "U"							
		2 1/2	4 1/2	7 1/2	10 1/2	13 1/2	16 1/2	19 1/2	22 1/2
1/2"-260R and 1/2"-260RL	Brass	207	75.5	27.3	13.9	8.4	5.6	4.1	3.0
		(59.3)	(32.2)	(19.7)					
	Carbon Steel	290	105	38.2	19.4	11.8	7.8	5.7	4.2
		(106)	(59)	(36.3)					
	A.I.S.I. 304 & 316	300	109	39.5	20.1	12.2	8.1	5.9	4.4
		(148)	(82.2)						
Monel	261	95	34.4	17.5	10.5	7.1	5.2	3.8	
	(118)	(65.5)							
3/4"-260R and 3/4"-260RL	Brass	207	89.1	32.2	16.4	9.9	6.6	4.8	3.6
		(59.3)	(39.8)	(23.9)					
	Carbon Steel	290	123	44.9	22.8	13.8	9.3	6.7	4.9
		(106)	(71.2)	(42.7)					
	A.I.S.I. 304 & 316	300	128	46.4	23.6	14.3	9.6	6.9	5.1
		(148)	(99.3)						
Monel	261	112	40.6	20.7	12.4	8.3	6.1	4.5	
	(118)	(79.8)							
1"-260R and 1"-260RL	Brass	207	102	37.0	18.8	11.4	7.6	5.5	4.1
		(59.3)	(47.6)	(28)					
	Carbon Steel	290	143	51.6	26.2	15.9	10.6	7.6	5.7
		(106)	(84.3)	(50.6)					
	A.I.S.I. 304 & 316	300	148	53.5	27.2	16.5	11.0	7.9	5.9
		(148)	(117)						
Monel	261	128	46.7	23.7	14.4	9.5	6.9	5.1	
	(118)	(93.3)							

- TO ORDER, PLEASE SPECIFY:**
1. Complete Type Number
  2. Material
  3. Cap & Chain - If Desired